



CLOUD TELESOL

- Expertise you need -

COMPANY PROFILE

Network Operation Centre

Service Delivery Centre

Trusted Expertise.
Limitless Possibilities.



CLOUD TELESOL
- Expertise you need -



TRUSTED
EXPERTISE



NETWORK
OPERATION CENTRE



SERVICE
DELIVERY CENTRE





ABOUT US

Cloud Telesol Pvt. Ltd. is a trusted network service provider delivering reliable router and SIM-based connectivity solutions across multiple locations. With expertise in managing large-scale network infrastructures, we ensure seamless connectivity, minimal downtime, and efficient operations. Our skilled engineers, support teams, and field technicians provide end-to-end network support through our centralized Network Operations Center (NOC).

- End-to-end router and network management
- 24/7 Network Operations Center (NOC) support
- SIM-based connectivity solutions for distributed networks
- Remote monitoring and proactive issue detection





Mr. Anoop Naidu
Director

- 30+years leading Projects & Business Operations in Power Transmission & Telecom
- Senior roles at Jyoti Structures, AT&T, Idea Cellular, TVS ICS, and ESSAR group environments Strong technical and business background in strategic planning, business unit development
- Deep experience in project/product management and systems engineering strategies

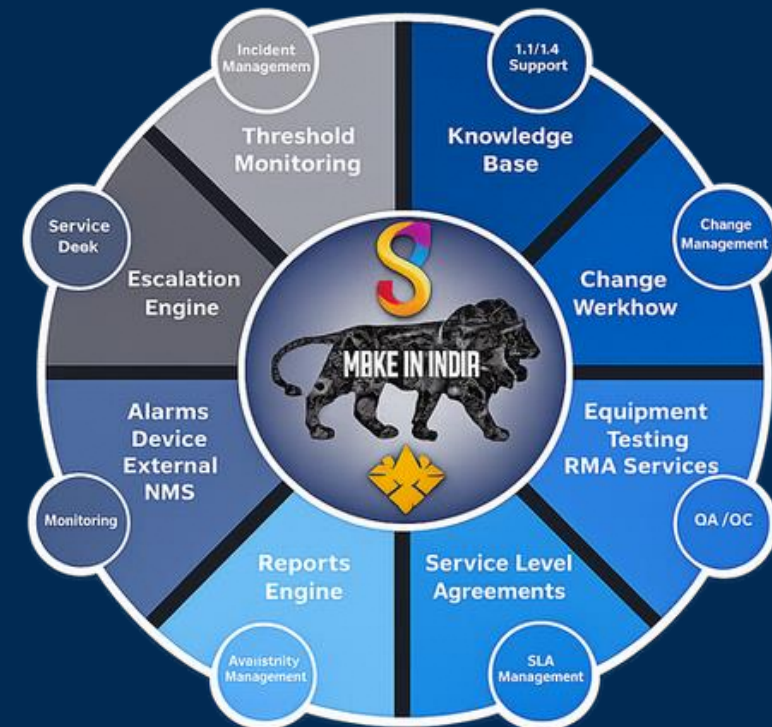


Mr. Girish Chemburkar
Service Delivery Head

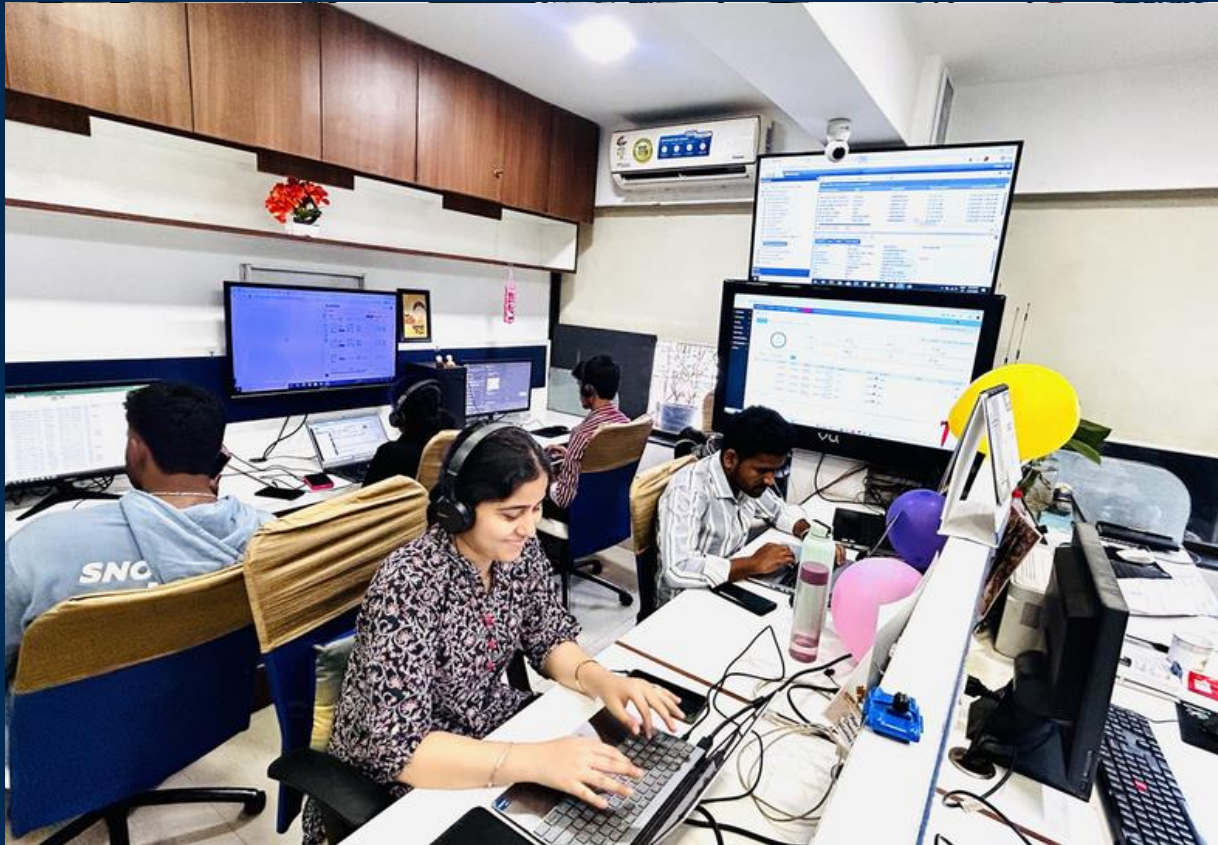
- Over 25 years of international experience in project execution and service delivery.
- Expertise in managing time-bound projects for leading PMCs, including Fluor International, LG Engineering, and SK Engineering.
- Worked with reputed global organizations such as Cooper Heat, MECC, and Lloyd's International. Strong experience in project management, operations, and client relationship management.

LEADERSHIP TEAM

CLOUD TELESOL PVT. LTD.



NETWORK OPERATIONS CENTRE (NOC)



We understand that network downtime impacts business operations. Our NOC team continuously monitors routers, SIM connectivity, and network devices to ensure stable performance. Using advanced monitoring systems, we identify and resolve potential issues proactively to maintain maximum uptime.

Our NOC is the backbone of our services, operating 24×7, 365 days a year.

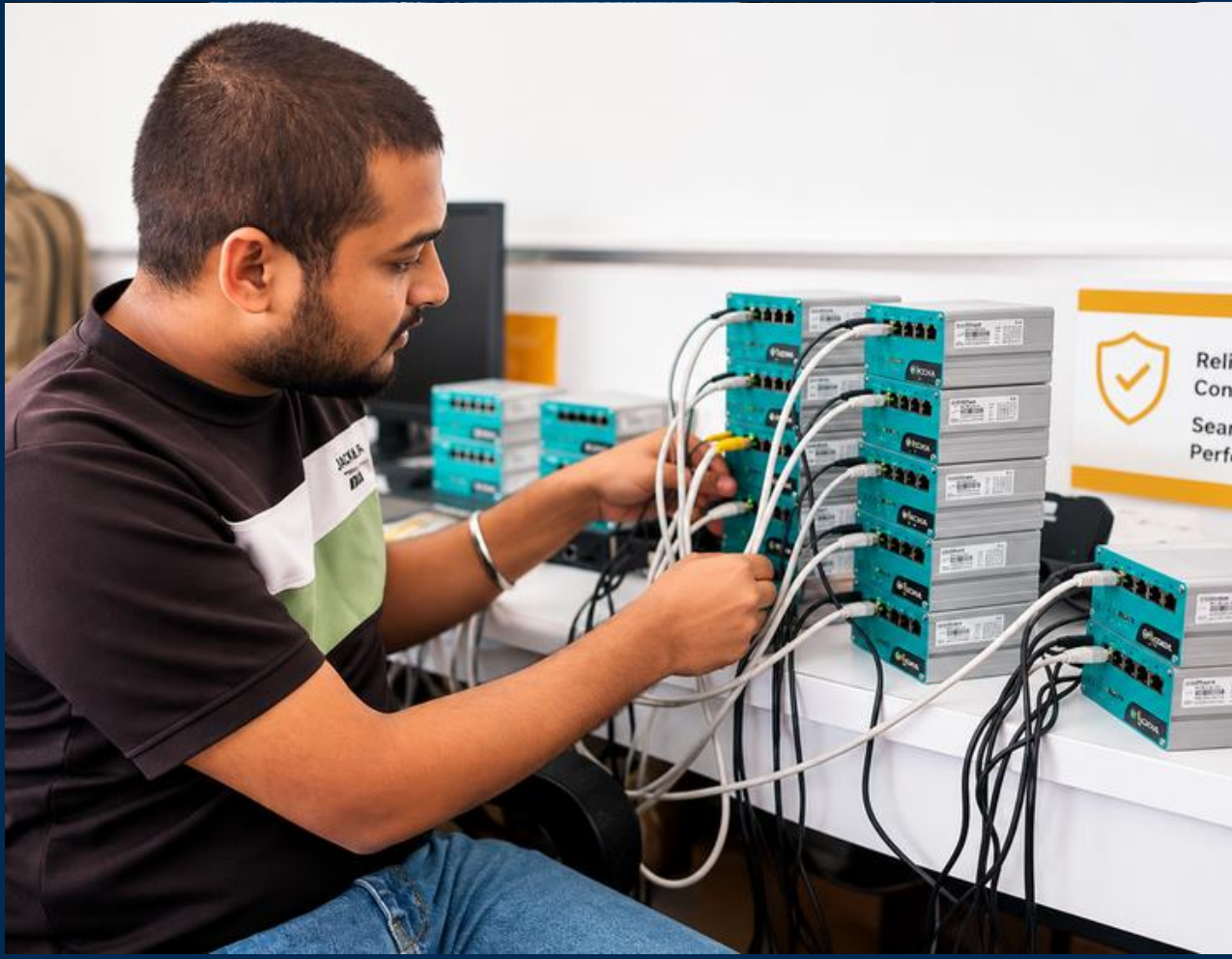
➤ Continuous monitoring of routers and connectivity

➤ Real-time alert systems
Immediate issue diagnosis and resolution

➤ Ticket-based tracking and reporting



IMPLEMENTATION & MIGRATION



Project Planning

- Requirement Gathering
- Site Survey & Assessment
- Resource Planning
- Deployment Scheduling

Dispatch & Logistics

- Site Branding
- Route Mapping
- Vendor Coordination
- Status Tracking

Device Preparation

- Firmware Installation
- Device Configuration
- Pre-Dispatch Testing
- Quality Validation

Installation & Handover

- On-Site Installation
- Remote Support
- Testing & Commissioning
- Documentation & Handover





SUPPORT STRUCTURE



Level 1 (L1) Support

- First point of contact
- Handles customer calls and emails
- Performs basic troubleshooting
- Logs and manages tickets

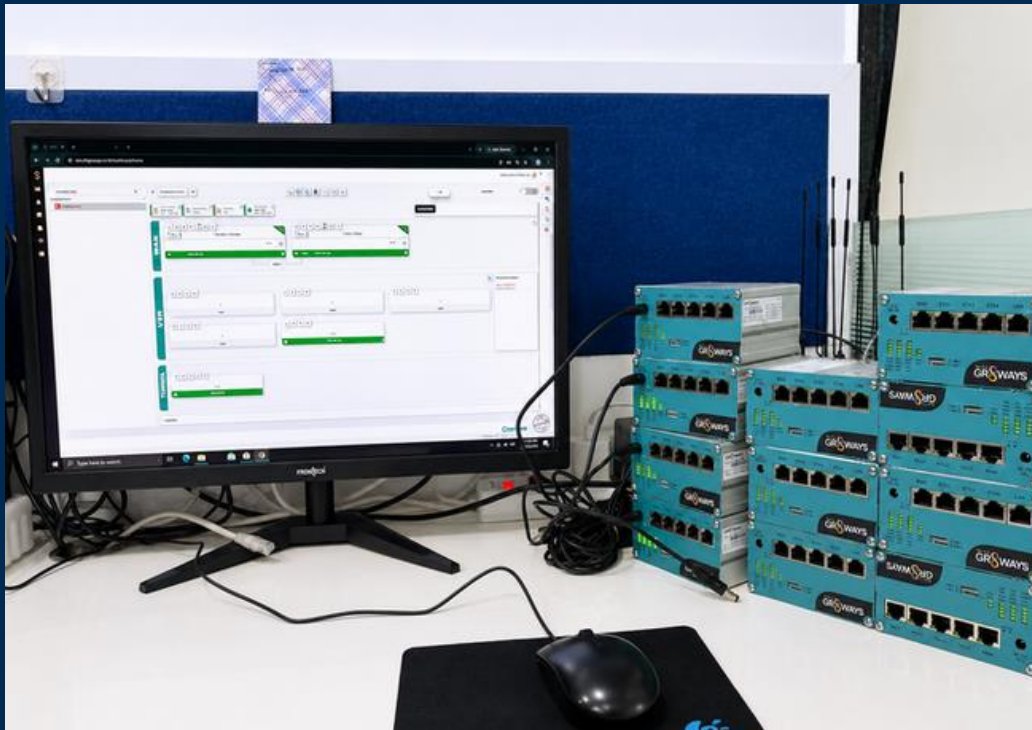
Level 2 (L2) Support

- Handles complex technical issues
- Performs root cause analysis
- Device configuration and optimization
- Supports field engineers



CORE VALUES

- **Support**
 - Offering dedicated assistance whenever needed.
- **Reliability**
 - Providing consistent and dependable services.



- **Speed**
 - Ensuring rapid response and issue resolution.
- **Simplicity**
 - Delivering easy-to-manage solutions.



OUR VISION & MISSION

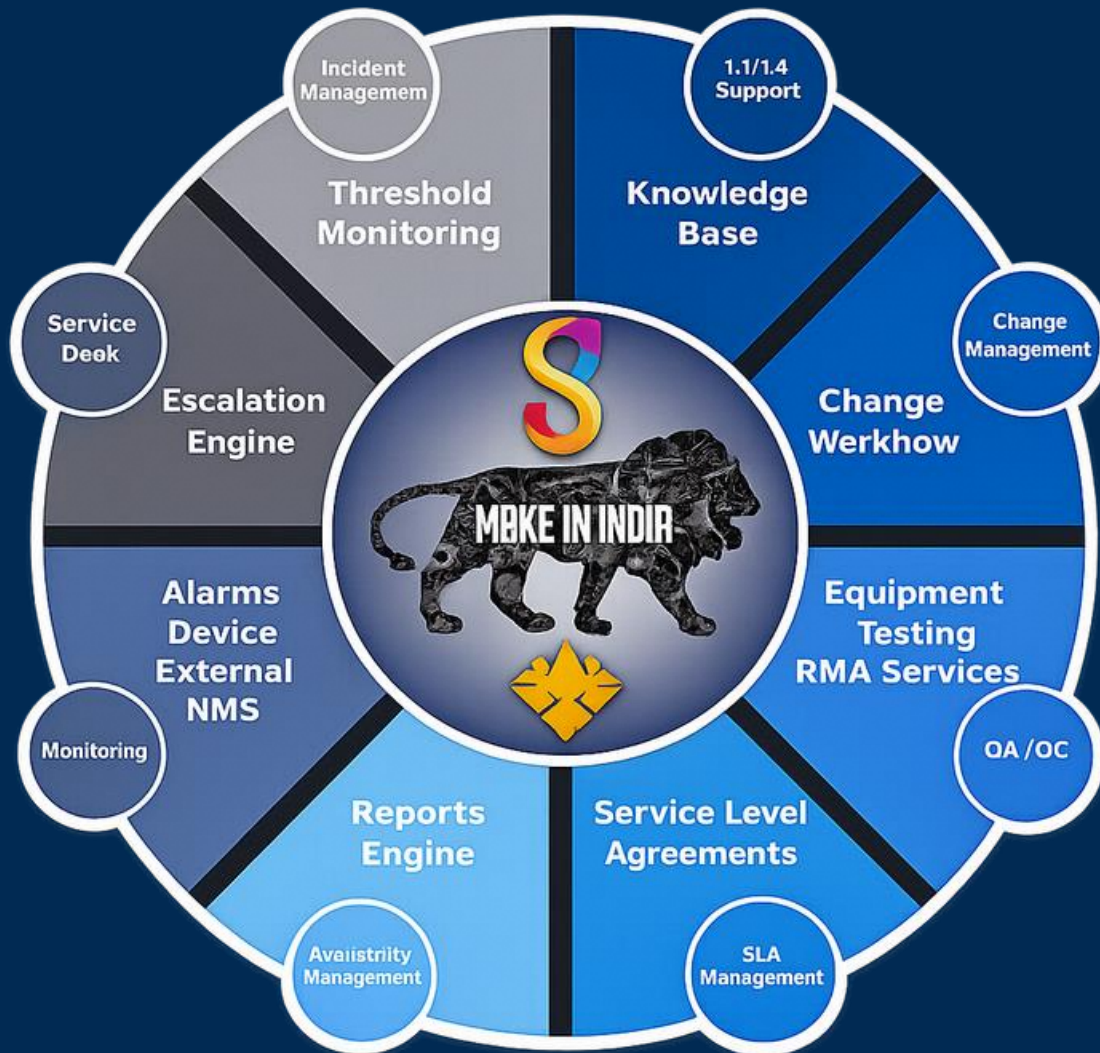
Our Vision

- To become a leading and trusted organization in the network services industry by delivering innovative, scalable, and high-quality solutions. We aim to set benchmarks in reliability, efficiency, and customer satisfaction.

Our Mission

- To deliver reliable, innovative, and high-quality network solutions that ensure uninterrupted connectivity, operational efficiency, and exceptional customer satisfaction.

WHY CHOOSE CLOUD TELESOL?



Business Value Delivered

- ✓ Reduce network downtime
- ✓ Improve operational efficiency
- ✓ Achieve faster issue resolution
- ✓ Ensure continuous connectivity
- ✓ Enhance business productivity
- ✓ Scale network operations efficiently



CLOUD TELESOL
- Expertise you need -

Thank You!

We appreciate your time and interest in **Cloud Telesol Pvt. Ltd.**



912245226683 / 912235216982



www.cloudtelesol.co.in



info@cloudtelesol.co.in



girish@cloudtelesol.com



Belapur Navi Mumbai
Maharashtra India

Follow Us:

